

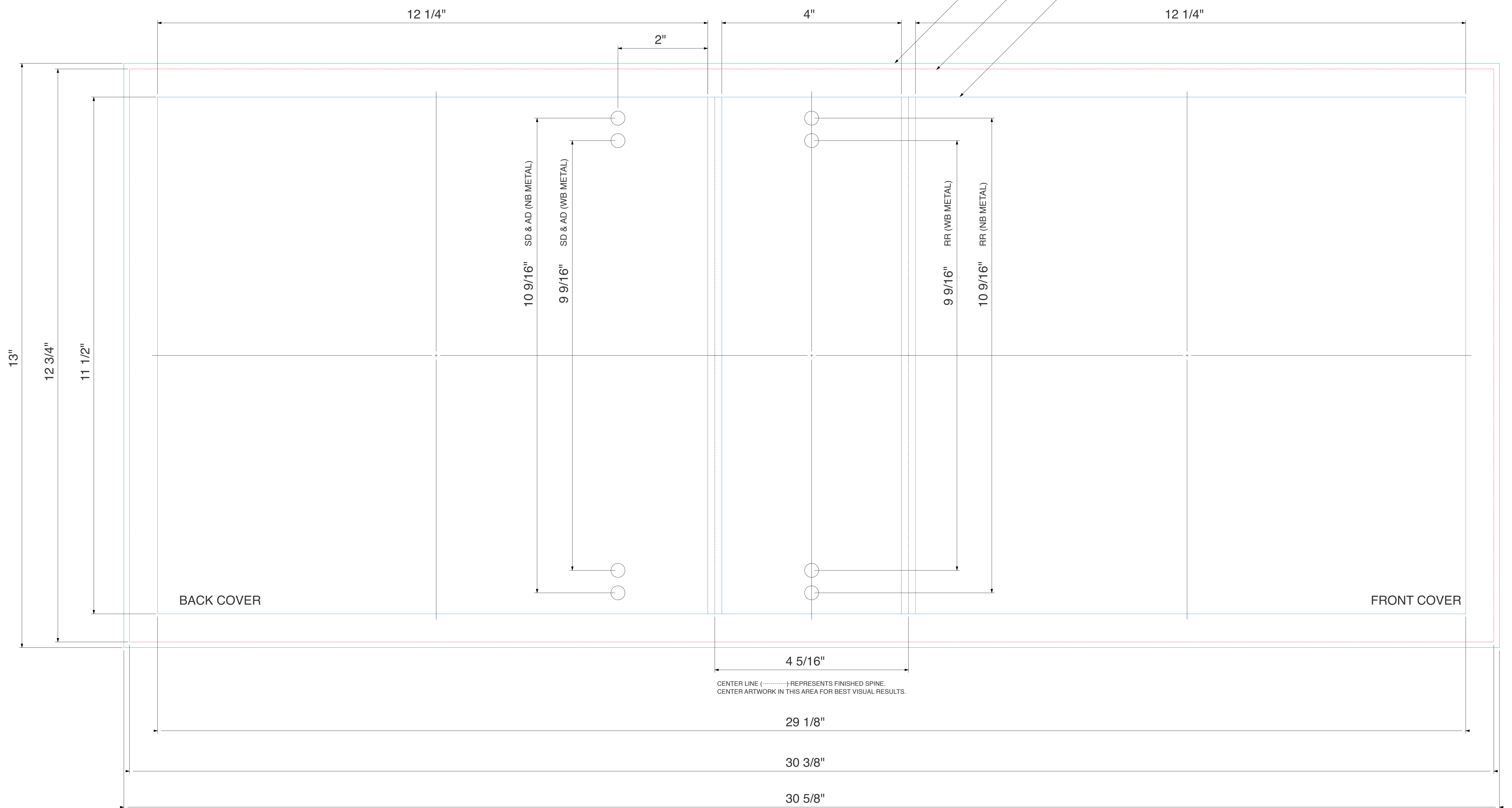
NOTE : IF ORDER IS TO BE CONCEALED RIVETS, PLEASE DISREGUARD INFORMATION ON DRAWING CONCERNING RIVET PLACEMENT.

RR - ROUND RING METAL
SD - STRAIGHT D METAL
AD - ANGLE D METAL

W/B - WITH BOOSTER
N/B - NO BOOSTER METAL

CMFS-300
11 X 9 SHEET SIZE
3" CAPACITY FLAT SPINE BINDER
ROUTED HINGE OR 2 EUROHINGES
RR - SD - AD METALS

THIS LINE INDICATES OVERALL SIZE OF MATERIAL.
EVERYTHING INSIDE THIS LINE WILL BE LIVE PRINT. ALL BLEEDS SHOULD EXTEND TO THIS LINE. PLEASE KEEP CROPS AND COLOR BARS OUTSIDE THIS LINE.
THIS LINE INDICATES FINISHED BINDER SIZE.



CMFS-300
11 X 9 SHEET SIZE
3" CAPACITY FLAT SPINE BINDER
ROUTED HINGE OR 2 EUROHINGES
RR - SD - AD METALS

LINER

THIS LINE INDICATES OVERALL SIZE OF MATERIAL.
EVERYTHING INSIDE THIS LINE WILL BE LIVE PRINT. ALL BLEEDS SHOULD EXTEND TO THIS LINE. PLEASE KEEP CROPS AND COLOR BARS OUTSIDE THIS LINE.
THIS LINE INDICATES FINISHED BINDER SIZE.
THIS LINE INDICATES FINAL TRIM SIZE OF LINER.

